

Please Ask For: Alex Carpenter
Tel: 01626 215929
Email: alex.carpenter@teignbridge.gov.uk



25th September 2024

Newton Abbot Town Clerk
Newton's Place
43 Wolborough Street
Newton Abbot
TQ12 1JQ

Sent by email only.

Dear Clerk,

Concession/Pop Up Site Consultation Request

As part of Teignbridge District Council (TDC) continued drive to increase efficiency and generate income from its assets the Estates department, along with colleagues in Parking Services, Green Spaces and Resorts, have reviewed sites across the district which we believe may be suitable to facilitate concession/pop up sites.

A concession/pop up site we are currently defining as an area of land which we could reasonably grant a licence to businesses/individuals to operate from. The activities could include but are not limited to Café/Food offering, Saunas, Dog Washing or any other such enterprise which would be appropriate. We will tailor the marketing details to reflect where certain uses won't be appropriate.

A number of these sites have been identified within Newton Abbot and we would invite your comments on the viability/suitability. The current sites are as follows:

- Sandringham Park, Buckland Playing Field
- Coach Road Playing Fields
- Courtenay Park
- Elizabeth Square
- Osborne Park

Our aim would be to make this an annual process, with sites marketed in Nov/Dec for the following financial year (from 01 April).

As this is the first instance in which we are attempting such an approach there may be site specific issues that we are not immediately aware of, so we would welcome any thoughts or comments about the process as we take it live.

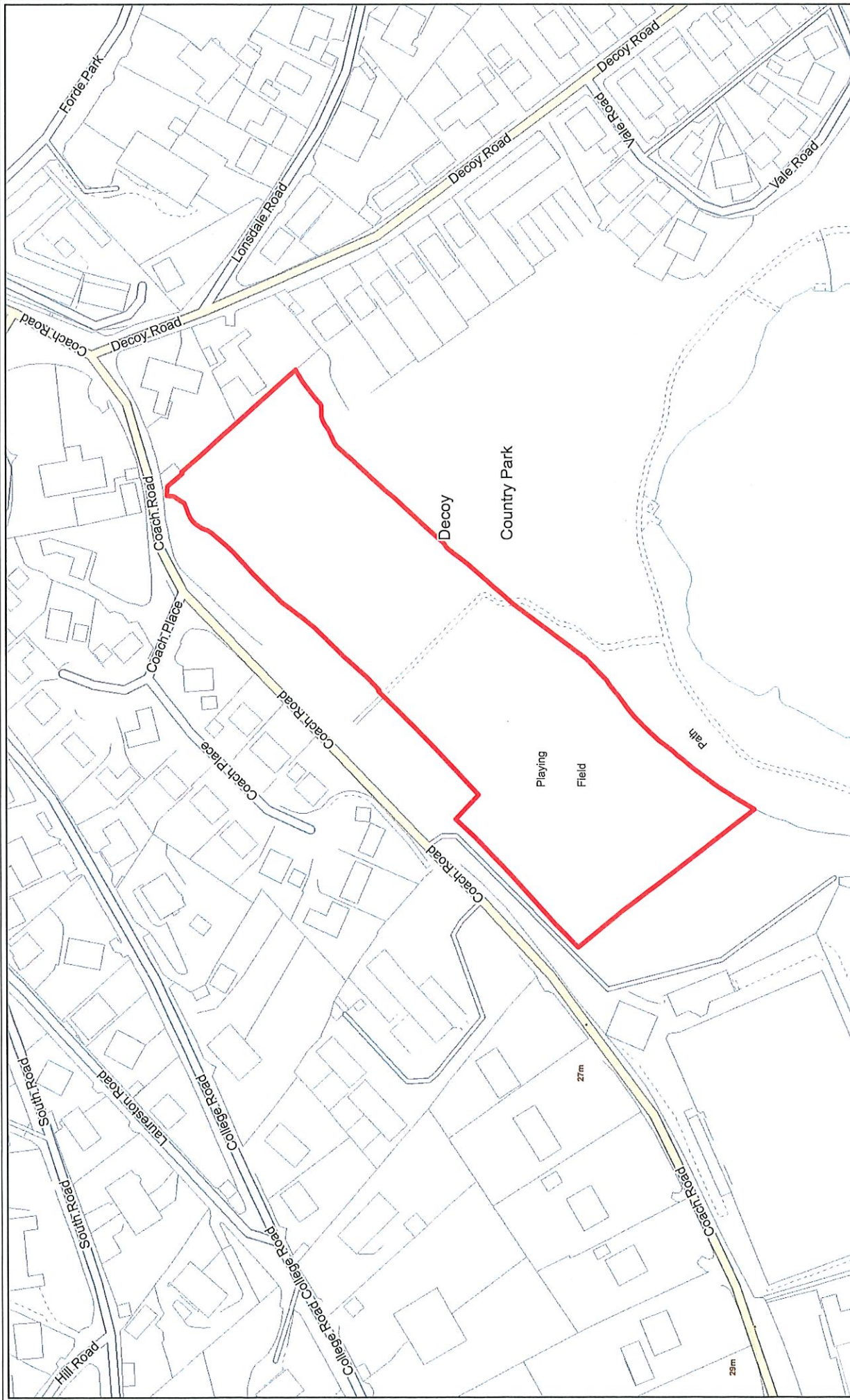
If you have any queries, please do let me know. If responses could be returned to me by 30.10.24 that would be greatly appreciated.

Yours sincerely & kind regards.

Alex Carpenter

Alex Carpenter
Graduate/Assistant Estate Surveyor
Teignbridge District Council





Newton Abbot - Coach Road playing fields



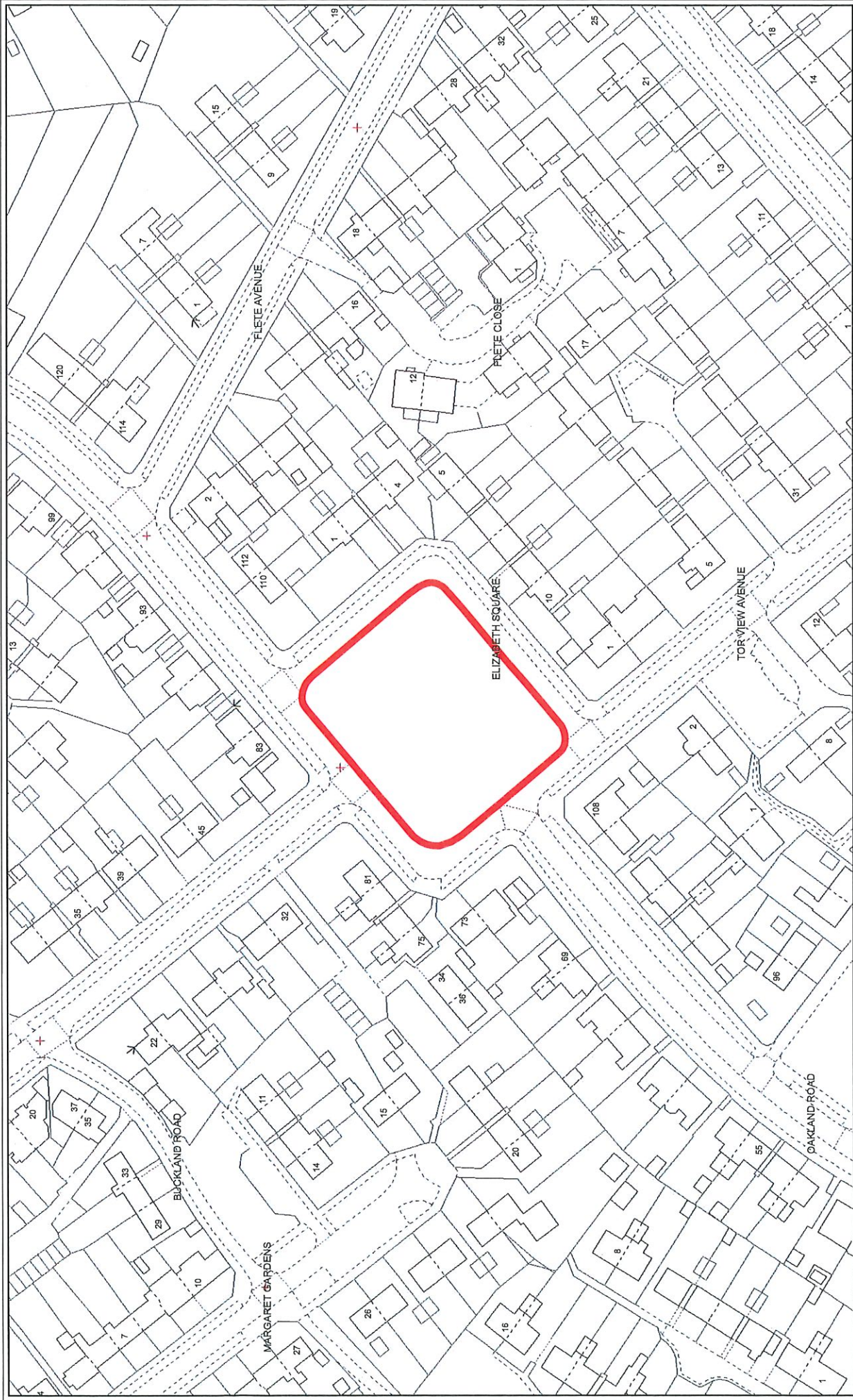
Meters 0 20 40 60

Scale: A4@ 1:2,025

Drawn By: SC

Date: 23/08/24

Based upon Ordnance Survey Material with permission of Ordnance Survey on behalf of the controller of Her Majesty's Stationary Office (C) Crown Copyright. Unauthorised reproduction infringes Crown Copyright and may lead to prosecution or civil proceedings. Teignbridge District Council 100024292 2007

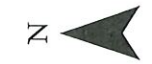
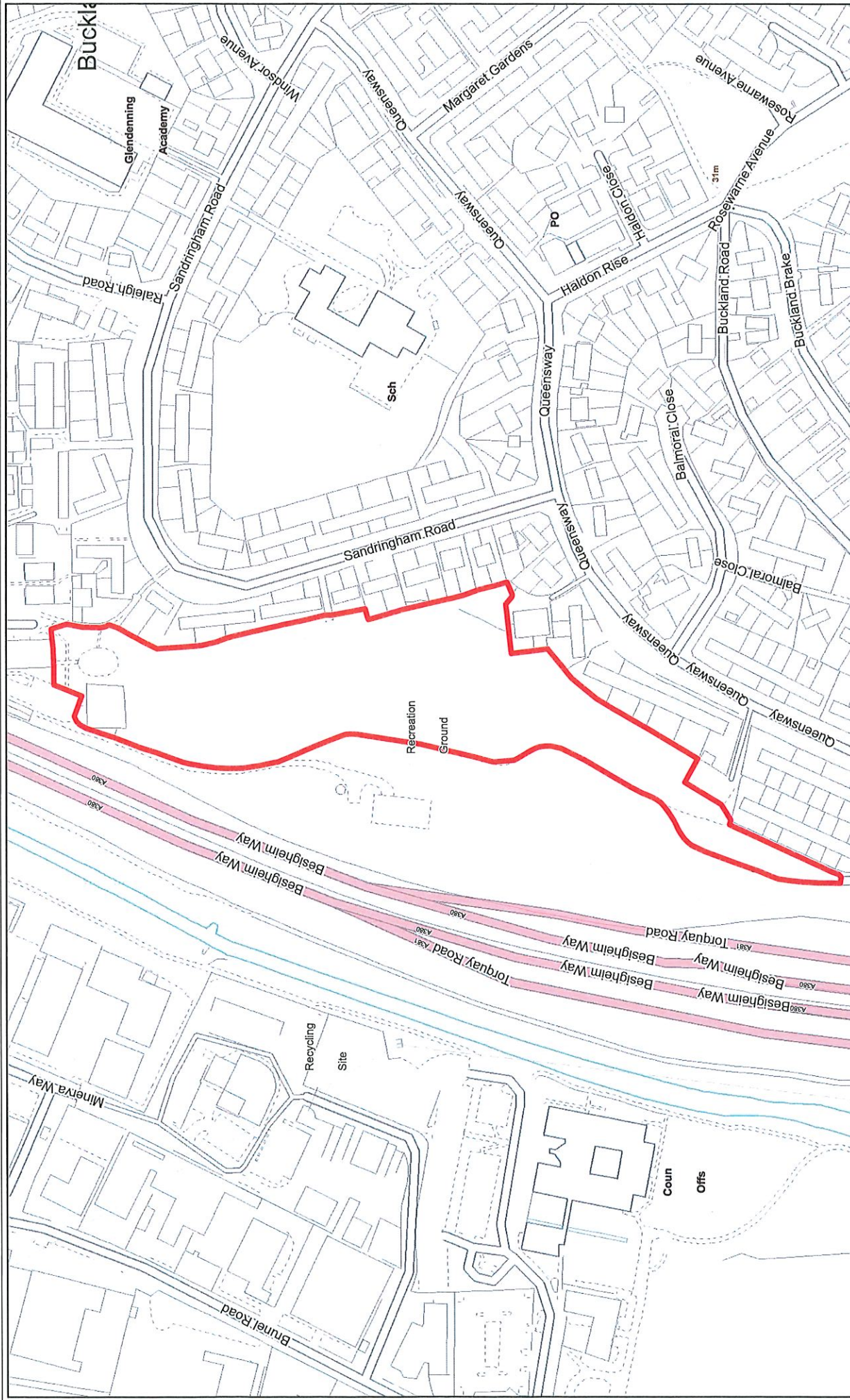


Newton Abbot - Elizabeth Square



Scale: A4@ 1:1,250 Drawn By: SC Date: 23/08/24

Based upon Ordnance Survey Material with permission of Ordnance Survey on behalf of the controller of Her Majesty's Stationary Office (C) Crown Copyright. Unauthorised reproduction infringes Crown Copyright and may lead to prosecution or civil proceedings. Teignbridge District Council 100024292 2007



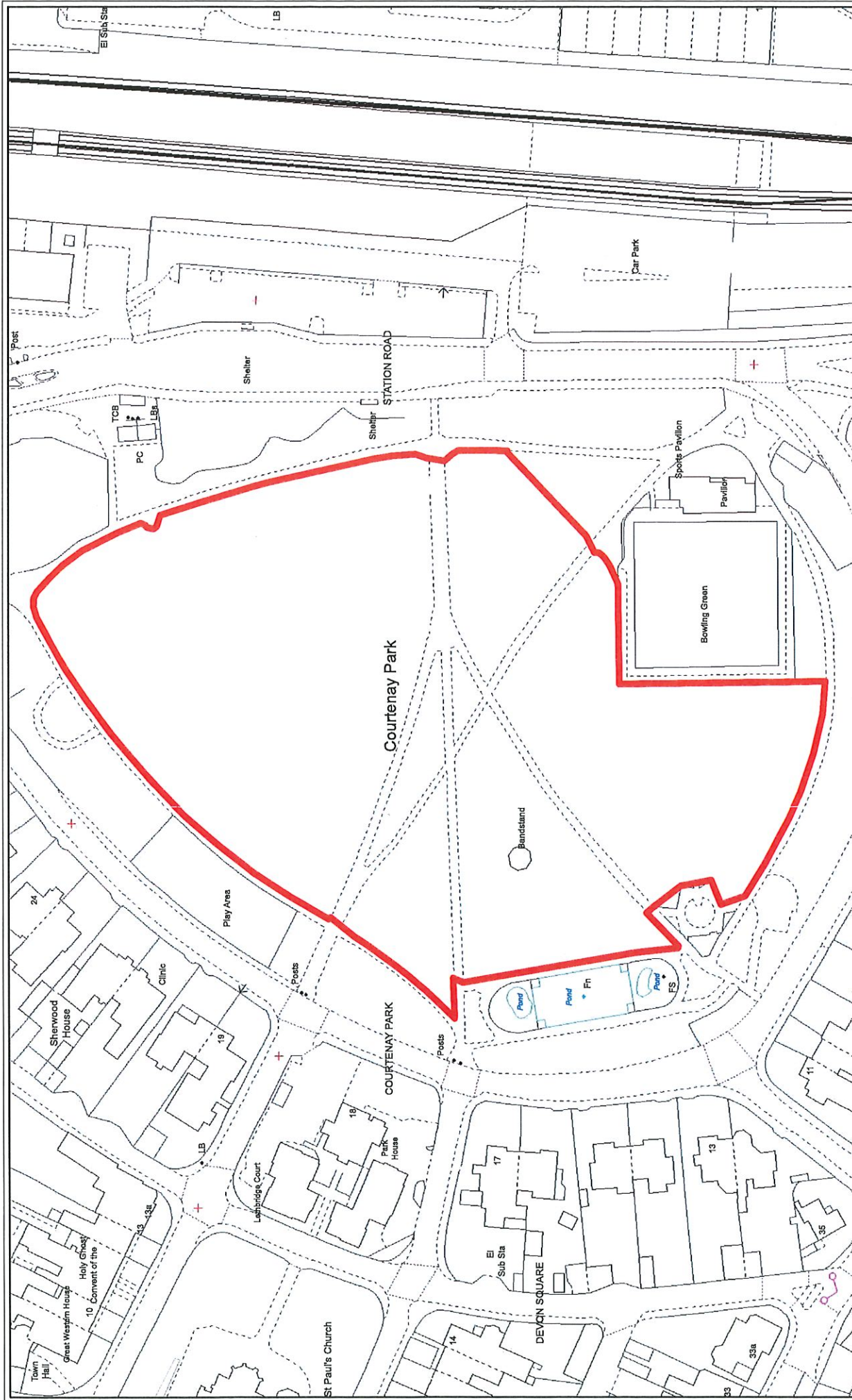
Newton Abbot - Sandringham Park

Date: 23/08/24

Drawn By: SC

Scale: A4@ 1:2,500

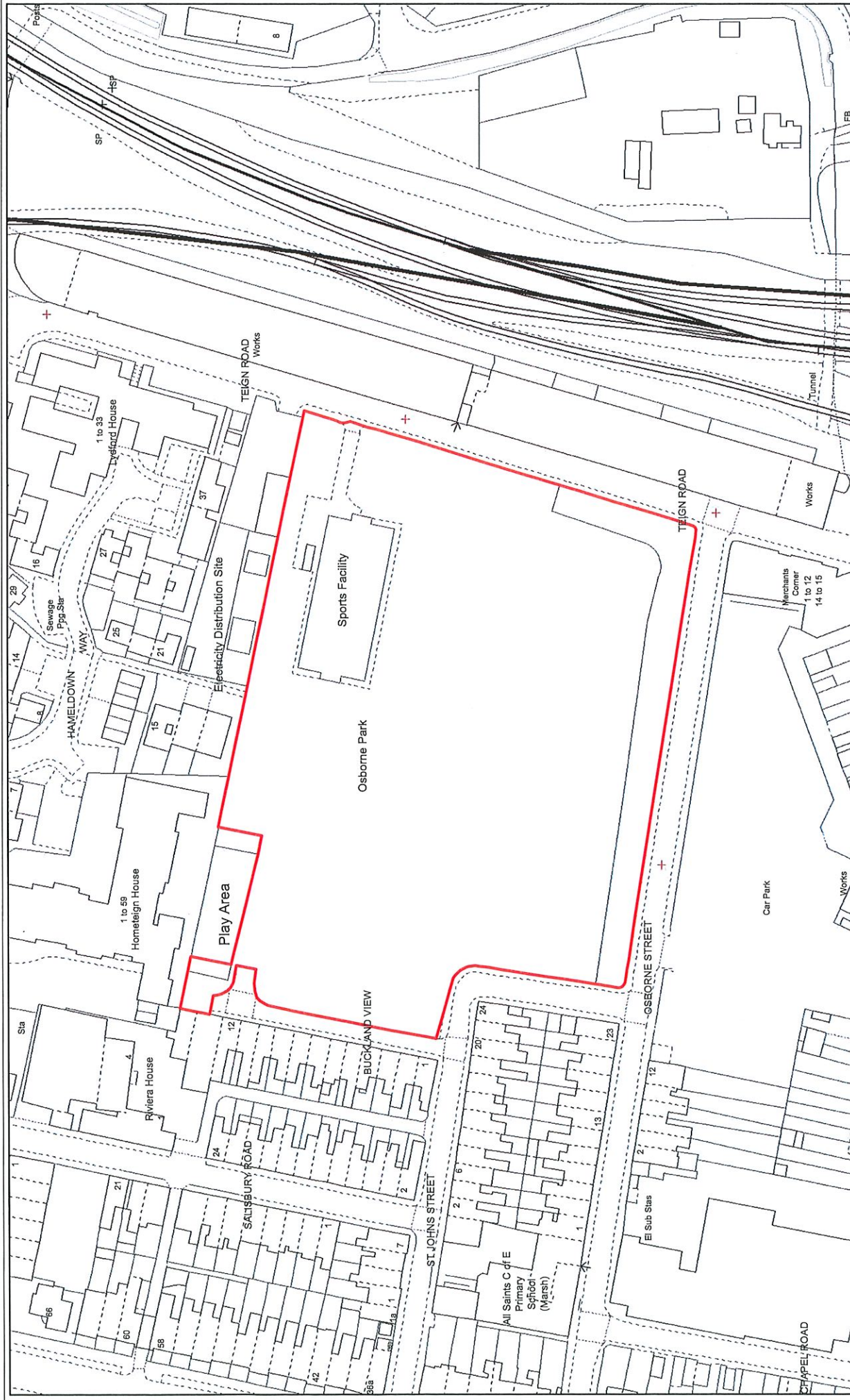
Based upon Ordnance Survey Material with permission of Ordnance Survey on behalf of the controller of Her Majesty's Stationary Office (C) Crown Copyright. Unauthorised reproduction infringes Crown Copyright and may lead to prosecution or civil proceedings. Teignbridge District Council 100024292 2007



Newton Abbot - Courtenay Park

Scale: A4@ 1:1,250 Drawn By: SC Date: 23/08/24

Based upon Ordnance Survey Material with permission of Ordnance Survey on behalf of the controller of Her Majesty's Stationary Office (C) Crown Copyright. Unauthorised reproduction infringes Crown Copyright and may lead to prosecution or civil proceedings. Teignbridge District Council 100024292 2007



Newton Abbot - Osborne Park



Scale: A4@ 1:1,250 Drawn By: SC Date: 23/08/24

Based upon Ordnance Survey Material with permission of Ordnance Survey on behalf of the controller of Her Majesty's Stationary Office (C) Crown Copyright. Unauthorised reproduction infringes Crown Copyright and may lead to prosecution or civil proceedings. Teignbridge District Council 100024292 2007